

MULTI-CARTRIDGE HOUSINGS FOR SMALL AND MEDIUM FLOW RATES

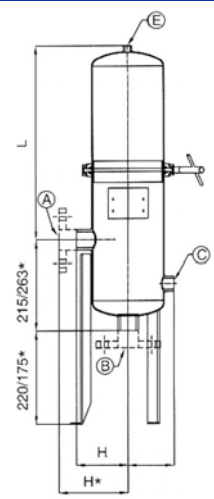
- Quick release “V Clamp” closure
- 316/L stainless steel construction
- The V-clamp closure is suitable to handle only with not hazardous liquids Group 2 in accordance with art. 4 par. 3 of PED Directive 2014/68/EU
- This series of housing accommodates double open end (DOE) and single open end (SOE) cartridges in 10", 20", 30", 40" length from 3 to 9 stacks suitable to hold 3 to 36 cartridges up to 10" long. AISI-316/L.
- Available for flow rate up to 54 m³/h (900 lt / 1')
- Available with threaded or flanged connections from 1" to 3"
- Designed for low differential pressures
- Gaskets available in EPDM, BUNA-N, VITON, SILICONE
- Available, upon request, special models

APPLICATIONS

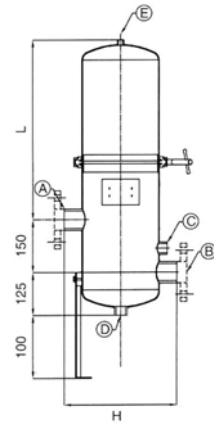
- Potable water
- Process water
- Edible oils
- Coatings, paints, inks & resins
- Lubricants
- Detergents
- Coolants
- Cutting oils



SERIES 3	MODEL	N° OF ELEMENT	MAX OPERATING PRESSURE	CONNECTIONS			DIMENSIONS			Weight kg	FLOW RATE** liter/h
				A-B	C	E	L	H	H*		
3÷12 CARTRIDGES	EFCEV0310	3 x h. 10"	10 bar @ 60°C	1.½" gas M	¾" gas F	¼" gas F	243	120	145	15	4500
	EFCEV0320	3 x h. 20" (6 x h. 10")					515			17,5	9000
	EFCEV0330	3 x h. 30" (9 x h. 10")					778			19,5	13500
	EFCEV0340	3 x h. 40" (12 X h. 10")					1045			21,5	18000



SERIES 5	MODEL	N° OF ELEMENT	MAX OPERATING PRESSURE	CONNECTIONS			DIMENSIONS			Weight kg	FLOW RATE** liter/h
				A-B	C-D	E	L	H	H*		
5÷20 CARTRIDGES	EFCEV0510	5 x h. 10"	8 bar @ 60°C	2" gas M	¾" gas F	¼" gas F	275	320	380	15	7500
	EFCEV0520	5 x h. 20" (10 x h. 10")					547	320	380	18	15000
	EFCEV0530	5 x h. 30" (15 x h. 10")					812	320	380	21,5	22500
	EFCEV0540	5 x h. 40" (20 x h. 10")					1065	320	380	25	30000



SERIES 9	MODELLO	N° OF ELEMENT	MAX OPERATING PRESSURE	CONNECTIONS			DIMENSIONS			Weight kg	FLOW RATE** liter/h
				A-B	C-D	E	L	H	H*		
9÷36 CARTRIDGES	EFCEV0920	9 x h. 20" (18 x h. 10")	8 bar @ 60°C	3" gas M	¾" gas F	¼" gas F	566	430	475	30	27000
	EFCEV0930	9 x h. 30" (27 x h. 10")					830			35	40500
	EFCEV0940	9 x h. 40" (36 x h. 10")					1095			40	54000

Available with connections different from those above mentioned. H* is referred to flanged versions.

END FITTINGS

